

Knauf Technical Substantiation Report

Reference: PFE7-13

Performance: 62dB Rw



Scope

This report outlines the test that has been carried out in order to determine the acoustic performance of the Knauf Performer partition described below.

System Build Up

2 x 15mm Knauf Soundshield Plus

70mm [0.55] Knauf 'C' Stud

Knauf Resilient Bar at 600mm centres

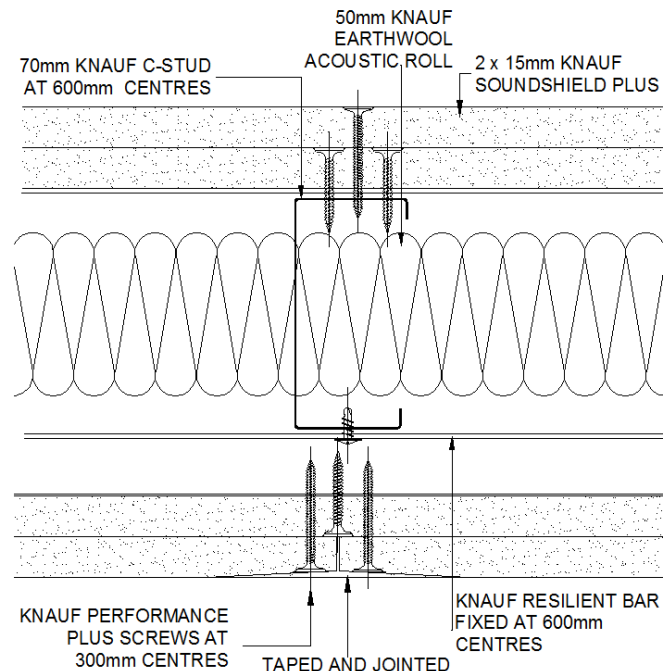
2 x 15mm Knauf Soundshield Plus

25mm Knauf Performance Plus Screws

45mm Knauf Performance Plus Screws

50mm Knauf Earthwool Acoustic Roll

148mm Overall Width



System Description

A non-loadbearing Knauf partition system comprising of 70mm [0.55] Knauf 'C' Studs at 600mm with Knauf Resilient Bars fixed at 600mm horizontal centres to one side, faced either side with a double layer of 15mm Knauf Soundshield Plus types A, D, F and I to EN 520:2004. Screw fixed at 300mm centres using 25mm and 45mm Knauf Performance Plus screws. Incorporating 50mm Knauf Earthwool Acoustic Roll within the cavity. All joints were staggered, taped and jointed.

Test Certificate No

P-BA 83/2008e

Supporting Data

A sound insulation test was conducted on a double skin Knauf partition system in accordance with EN ISO 140-3:2005. The system comprised of a double layer of 15mm Knauf Soundshield (now known as Knauf Soundshield Plus) each side of 70mm Knauf 'C' studs. On one side the boards were fixed to the studs on the other side the boards were fixed to Knauf Resilient Bars. The resilient bars were fixed to the studs at 600mm horizontal centres. The system incorporated 50mm Knauf Acoustic Partition Roll (now known as Knauf Earthwool Acoustic Roll) within the cavity. All joints were staggered, taped and jointed. The partition system achieved an acoustic rating of 62dB Rw in accordance with EN ISO 717-1.

Build for the world we live in

Knauf, Kemsley Fields Business Park, Sittingbourne, Kent ME9 8SR

Technical line: 0800 030 4135 Email: technical@knauf.co.uk Twitter: @KnaufTechnical

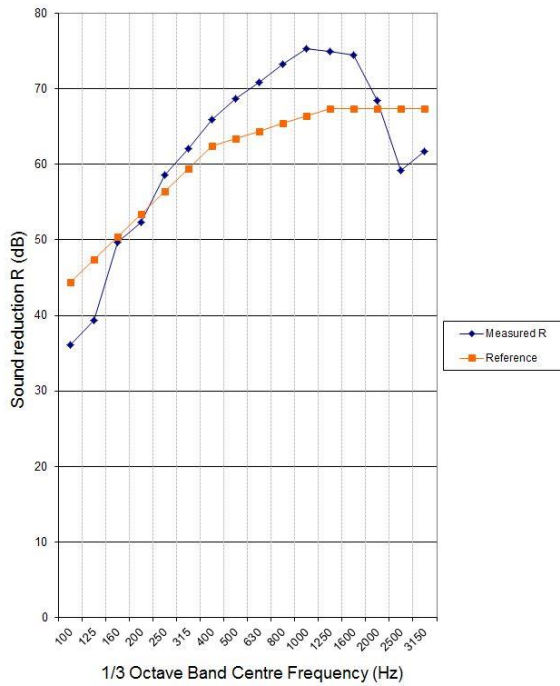
Knauf Technical Substantiation Report

Reference: PFE7-13

Performance: 62dB Rw



Measured and reference curves



Frequency - 1/3rd Octave band (Hz)	Measured Ri (dB)
100	42
125	41.8
160	54
200	56.3
250	60.8
315	64.9
400	68
500	69
630	70.9
800	72.1
1000	73.8
1250	76.2
1600	74.6
2000	65.1
2500	66
3150	71.7

Summary table		
Rw (dB)	C	Ctr
62	-4	-9

Conclusion

Therefore, the Knauf Performer partition as described in the 'System Build Up' of this report, is suitable for installations where an acoustic rating of 62dB Rw is required, in accordance with BS EN ISO 717-1:1997.

Prepared for and on behalf of Knauf by:



 Technical Support Representative

15/08/18
 Date

Approved on behalf of Knauf Drywall by:



 Fiona Misiri
 Technical Support Team Leader



 Joseph Sargeantson
 Technical Services Director

15/08/18
 Date

Note: The results only relate to the behaviour of the element of construction under the particular conditions of the test. They are not intended to be the sole criteria for assessing the potential acoustic performance of the final installed element in use, nor do they reflect the actual behaviour given site considerations. For Terms & Conditions please visit www.knauf.co.uk

Build for the world we live in