

Knauf Technical Substantiation Report

Reference: ILC1-13

Performance: 67 dB Rw



Scope

This report outlines the test that has been carried out in order to determine the acoustic performance of the Knauf Isolator partition described below.

System Build Up

2 x 15mm Knauf Soundshield Plus

Twin 70mm [0.7] Knauf 'I' Stud

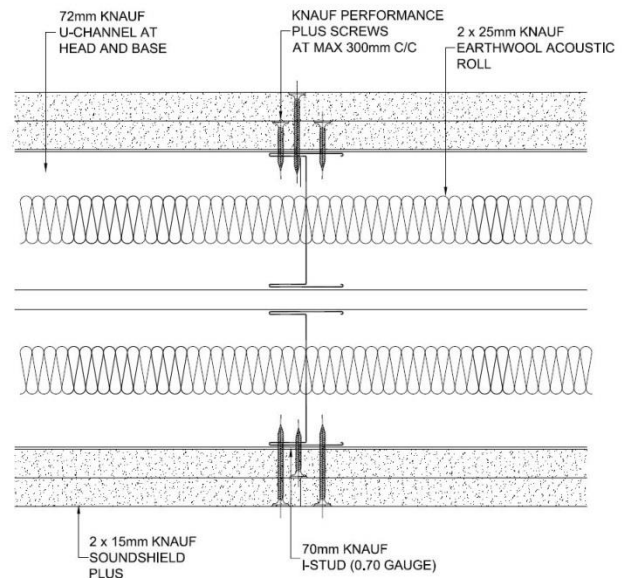
2 x 15mm Knauf Soundshield Plus

25mm Knauf Performance Plus Screws

45mm Knauf Performance Plus Screws

2 x 25mm Knauf Acoustic Partition Roll

210mm Overall Width



System Description

A non-loadbearing Knauf partition system comprising of twin 70mm [0.7] Knauf 'I' Studs at 600mm centres faced either side with a double layer of 15mm Knauf Soundshield Plus, types A, D, F and I to EN 520:2004. Screw fixed at 300mm centres using 25mm & 45mm Knauf Performance Plus Screws incorporating 2 x 25mm Knauf Earthwool Acoustic Roll with in the cavity. All joints were staggered, taped and filled.

Test Certificate No

SWW 11 007 -01

Supporting Data

A sound insulation test was conducted on a double skin twin frame Knauf partition system in accordance with BS EN ISO 140-3:1995. The system comprised of a double layer of 15mm Knauf Soundshield (now known as Knauf Soundshield Plus), fixed at 300mm centres with 25mm & 45mm Knauf Performance Plus Screws to each side of twin 70mm [0.55] Knauf C Studs at 600mm centres supported by 72mm Knauf 'U' Channel at the head and base. Incorporating 2 x 25mm Acoustic Partition Roll (now known as Knauf Earthwool Acoustic Roll) within the cavity, board joints were taped and filled. The partition system achieved an acoustic rating of 67dB Rw in accordance with BS EN ISO 717-1:1997.

Build for the world we live in

Knauf Technical Substantiation Report

Reference: ILC1-13

Performance: 67 dB Rw



Conclusion

The tested system differs from the proposed system. The tested system comprised of 70mm [0.55] Knauf C studs, whereas the proposed system uses 70mm [0.7] Knauf I studs. We would expect to see no detrimental effects by altering from a 70mm [0.55] Knauf C Stud to a 70mm Knauf I stud.

Therefore, the Knauf Isolator partition as described in the 'System Build Up' of this report is suitable for installations where an acoustic rating of 67dB Rw is required, in accordance with BS EN ISO 717- 1:1997.

Please Note: Knauf Soundshield is now known as Knauf Soundshield Plus.

Prepared for and on behalf of Knauf by:

Technical Support Representative

15/08/18

Date,

Approved on behalf of Knauf Drywall by:

Fiona Misiri
Technical Support Team Leader

Joseph Sargeantson
Technical Services Director

15/08/18

Date

Note: The results only relate to the behaviour of the element of construction under the particular conditions of the test. They are not intended to be the sole criteria for assessing the potential acoustic performance of the final installed element in use, nor do they reflect the actual behaviour given site considerations. For Terms & Conditions please visit www.knauf.co.uk

Build for the world we live in