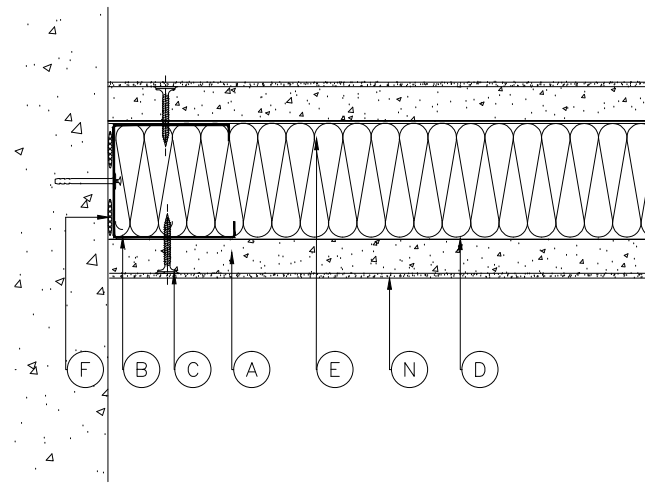
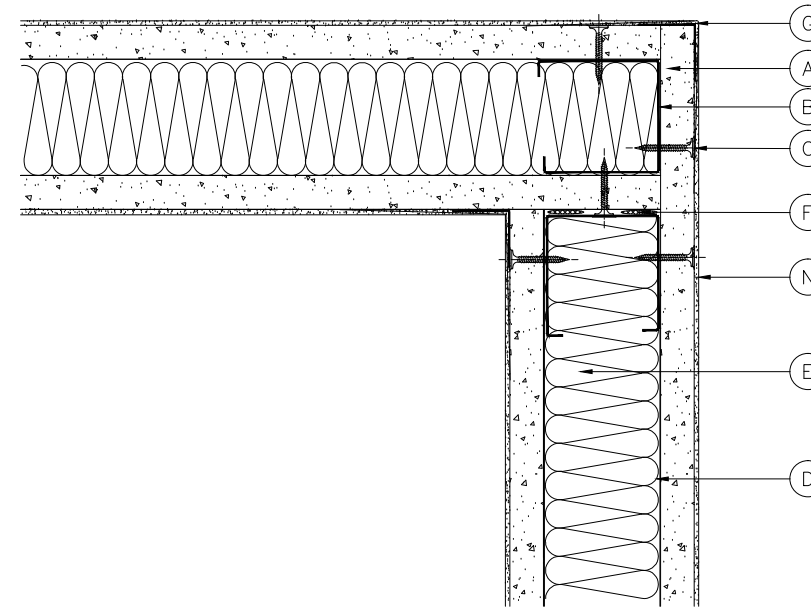


NOTE:
- ACOUSTIC CONSULTANT TO APPROVE FLANKING PATHS
- DETAILS TO BE READ IN CONJUNCTION WITH KNAUF '10' PROJECT SPECIFICATION

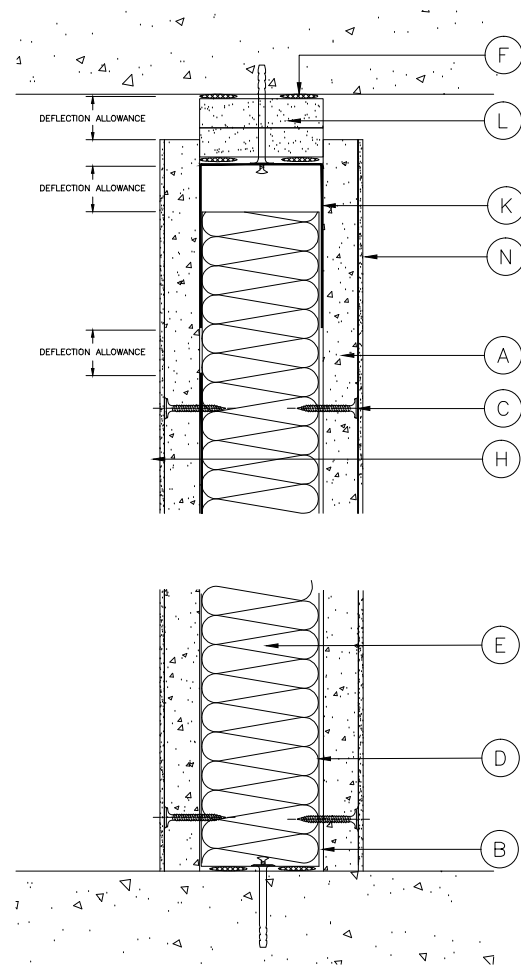
1. SECTION THROUGH ON PLAN



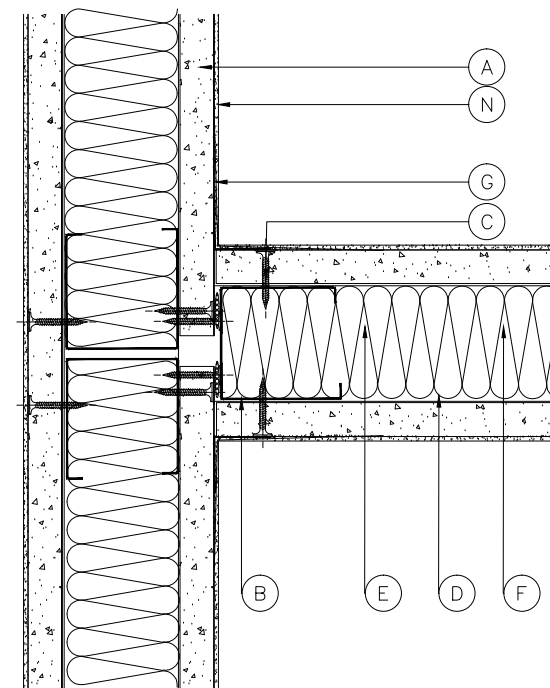
2. ABUTMENT TO CONCRETE



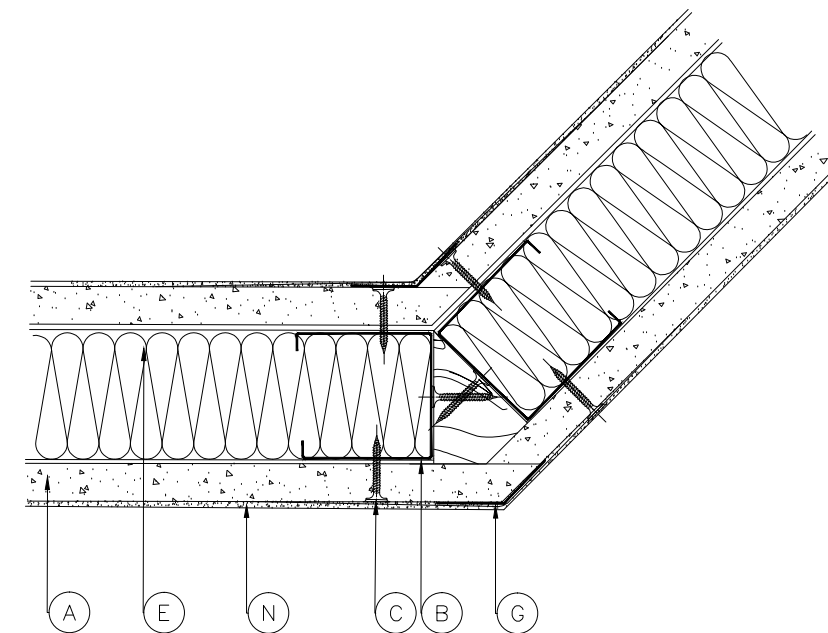
3. CORNER JUNCTION



4. DEFLECTION HEAD



5. T-JUNCTION



6. SPLAYED ANGLE CORNER

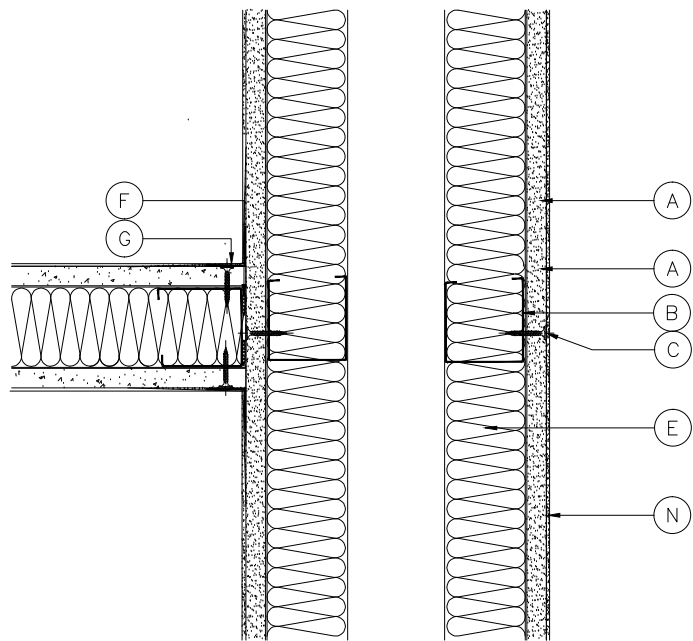
A	1 x12.5mm KNAUF AQUAPANEL INTERIOR
B	50mm KNAUF ACOUSTIC 'C' STUDS AT MAX 600mm CENTRES
C	KNAUF FIXINGS
D	52mm KNAUF 'U' CHANNEL
E	50mm KNAUF EARTHWOOL ACOUSTIC ROLL
F	KNAUF INTUMESCENT & ACOUSTIC MASTIC
G	KNAUF AQUAPANEL JOINTING RANGE
H	KNAUF FLAT PLATE
I	SHAPED TIMBER GROUND (BY OTHERS)
J	ACOUSTIC 'C' STUDS
K	52mm KNAUF DEEP FLANGE 'U' CHANNEL
L	KNAUF FIRE PANEL FILLETS TO SUIT DEFLECTION WITH 10mm OVERLAP
M	KNAUF PUTTY PAD
N	KNAUF AQUAPANEL INTERIOR SKIM

SYSTEM PERFORMANCE:	
FIRE :	NONE
SOUND:	44dB Rw
MAX HEIGHT*:	2700mm
IMPACT DUTY**:	SEVERE
MIN. WIDTH:	77mm
*MAXIMUM HEIGHT CALCULATED BASED ON A LIMITING DEFLECTION OF L/240 AT 200Pa	
**IMPACT DUTY IN ACCORDANCE WITH BS5234-2:1992 ANNEXES B, C, D, E.	

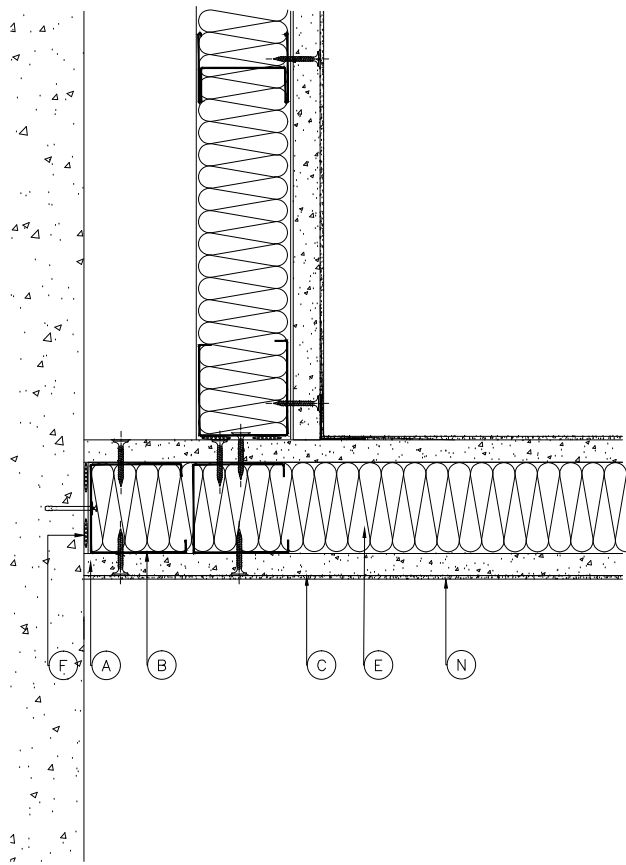
NOTES



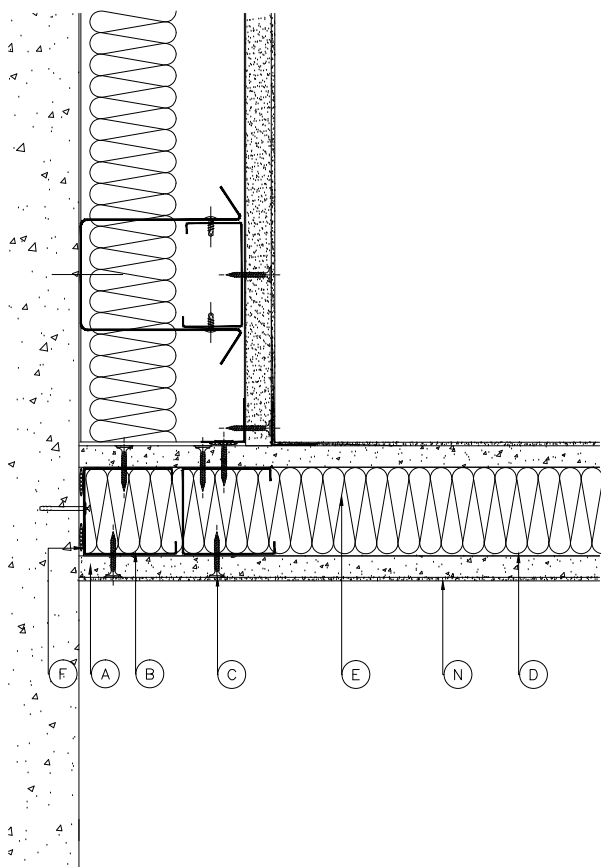
PROJECT: A11-11	
TITLE: STANDARD DETAILS	
SHEET 1 OF 4	
DRG. No: K10-126-101	
DRN: TECH	SCALE: NTS
DATE: 2018	REV. No: A



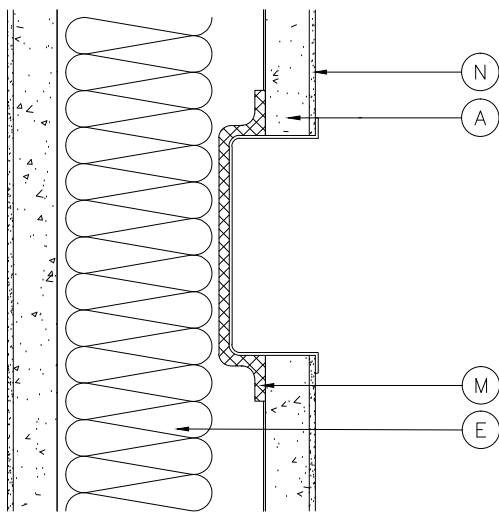
1. PERFORMER TO ISOLATOR JUNCTION



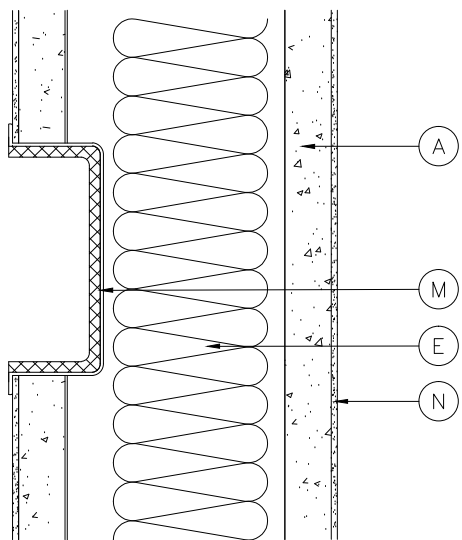
2. INDEPENDENT 'I' STUD LINING TO PERFORMER JUNCTION



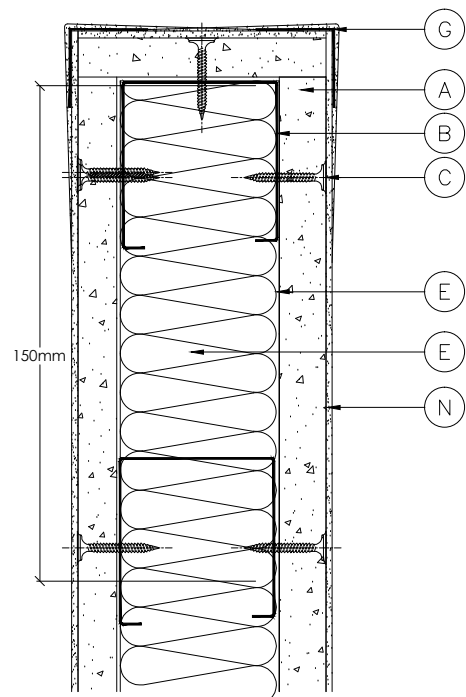
3. WALL LINER TO PERFORMER JUNCTION




4. PUTTY PAD DETAIL

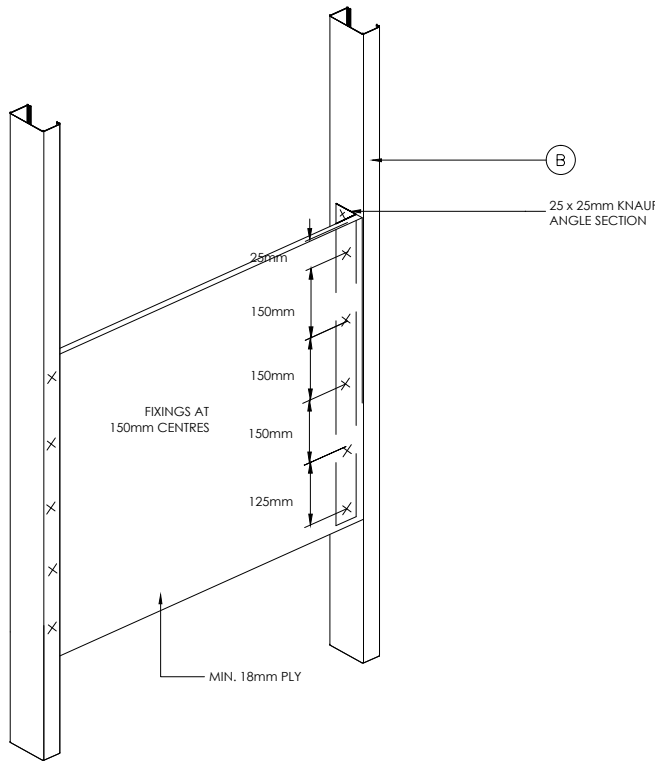


5. PUTTY PAD DETAIL



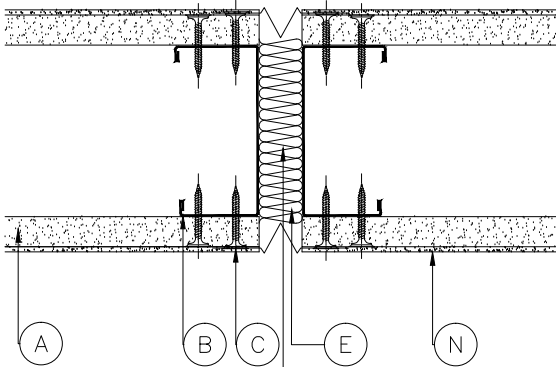
6. FAIR END DETAIL

A	1 x12.5mm KNAUF AQUAPANEL INTERIOR
B	50mm KNAUF ACOUSTIC 'C' STUDS AT MAX 600mm CENTRES
C	KNAUF FIXINGS
D	52mm KNAUF 'U' CHANNEL
E	50mm KNAUF EARTHWOOL ACOUSTIC ROLL
F	KNAUF INTUMESCENT & ACOUSTIC MASTIC
G	KNAUF AQUAPANEL JOINTING RANGE
H	KNAUF FLAT PLATE
I	SHAPED TIMBER GROUND (BY OTHERS)
J	ACOUSTIC 'C' STUDS
K	52mm KNAUF DEEP FLANGE 'U' CHANNEL
L	KNAUF FIRE PANEL FILLETS TO SUIT DEFLECTION WITH 10mm OVERLAP
M	KNAUF PUTTY PAD
N	KNAUF AQUAPANEL INTERIOR SKIM
SYSTEM PERFORMANCE: FIRE : NONE SOUND: 44dB Rw MAX HEIGHT*: 2700mm IMPACT DUTY**: SEVERE MIN. WIDTH: 77mm <small>*MAXIMUM HEIGHT CALCULATED BASED ON A LIMITING DEFLECTION OF L/240 AT 200Pa</small> <small>**IMPACT DUTY IN ACCORDANCE WITH BS5234-2: 1992 ANNEXES B, C, D, E.</small>	
NOTES	
	
PROJECT: A11-11	
TITLE: STANDARD DETAILS	
SHEET 2 OF 4	
DRG. No: K10-126-102	
DRN: TECH	SCALE: NTS
DATE: 2018	REV. No: A



WHERE PLYWOOD IS REQUIRED TO RESILIENT BAR SIDE IT MUST BE APPLIED ON TOP OF RESILIENT BAR IN ORDER TO MAINTAIN ACOUSTIC PERFORMANCE

1. PATRESS DETAIL



2. MOVEMENT CONTROL JOINT

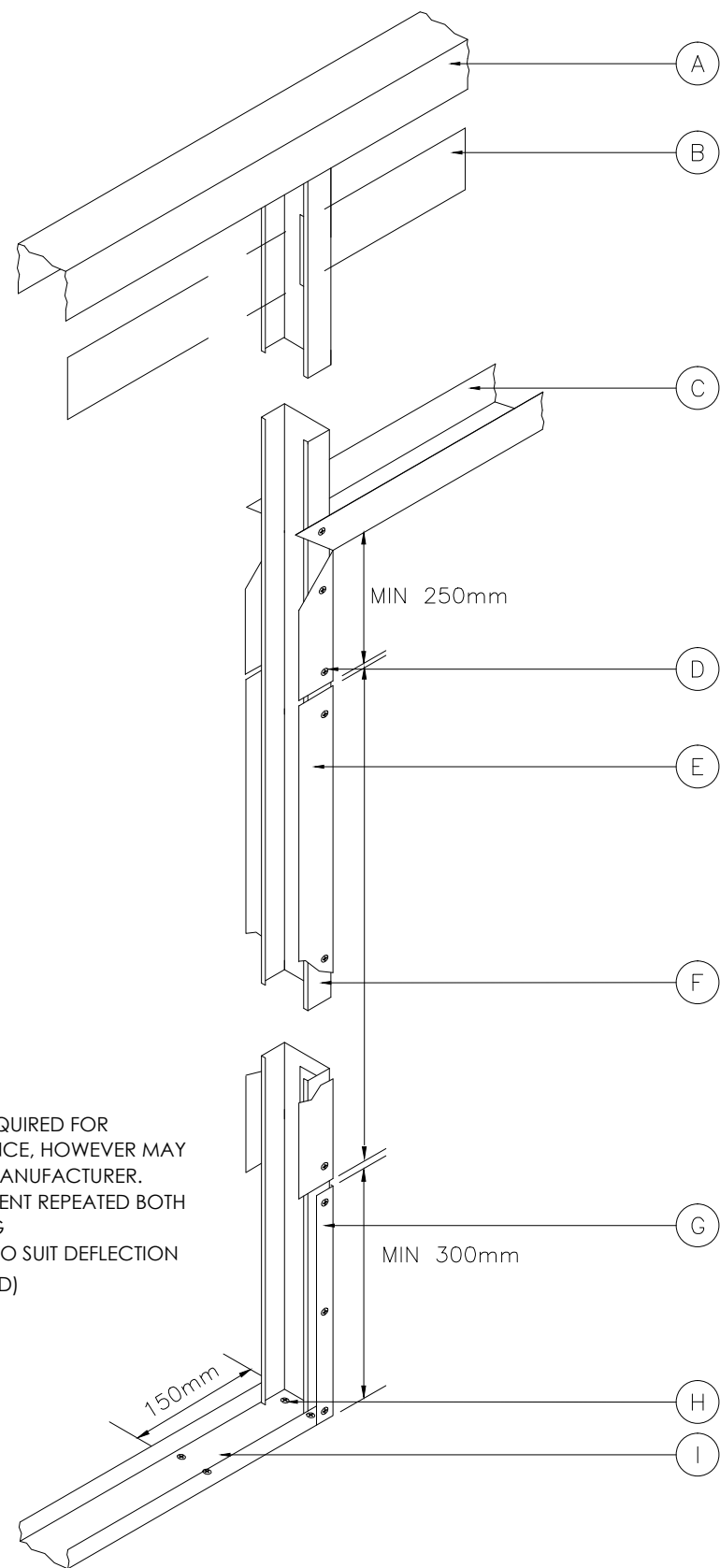
A	1 x12.5mm KNAUF AQUAPANEL INTERIOR
B	50mm KNAUF ACOUSTIC 'C' STUDS AT MAX 600mm CENTRES
C	KNAUF FIXINGS
D	52mm KNAUF 'U' CHANNEL
E	50mm KNAUF EARTHWOOL ACOUSTIC ROLL
F	KNAUF INTUMESCENT & ACOUSTIC MASTIC
G	KNAUF AQUAPANEL JOINTING RANGE
H	KNAUF FLAT PLATE
I	SHAPED TIMBER GROUND (BY OTHERS)
J	ACOUSTIC 'C' STUDS
K	52mm KNAUF DEEP FLANGE 'U' CHANNEL
L	KNAUF FIRE PANEL FILLETS TO SUIT DEFLECTION WITH 10mm OVERLAP
M	KNAUF PUTTY PAD
N	KNAUF AQUAPANEL INTERIOR SKIM

SYSTEM PERFORMANCE:	
FIRE :	NONE
SOUND:	44dB Rw
MAX HEIGHT*:	2700mm
IMPACT DUTY**:	SEVERE
MIN. WIDTH:	77mm
<small>*MAXIMUM HEIGHT CALCULATED BASED ON A LIMITING DEFLECTION OF L/240 AT 200Pa</small>	
<small>**IMPACT DUTY IN ACCORDANCE WITH BS5234-2:1992 ANNEXES B, C, D, E.</small>	

NOTES



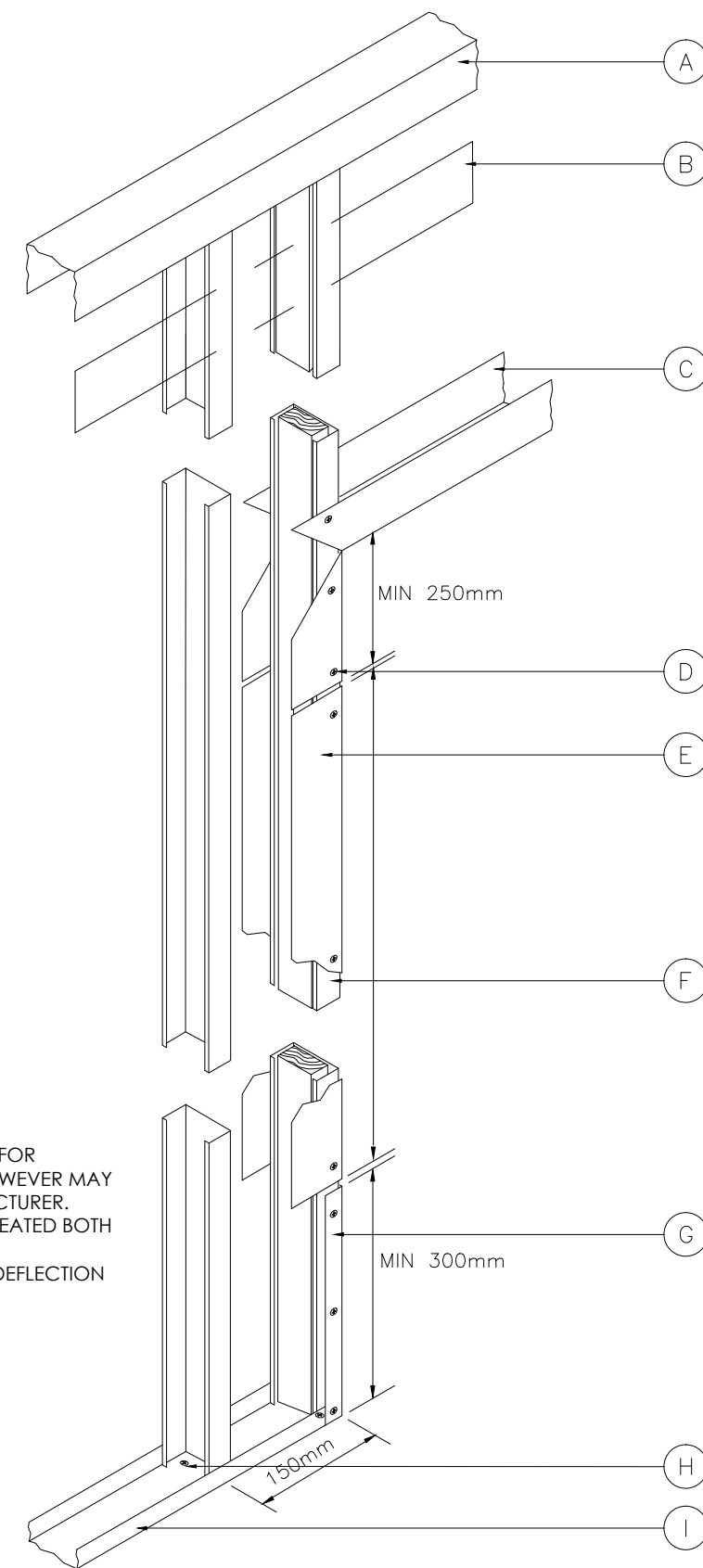
PROJECT:		A11-11	
TITLE:		STANDARD DETAILS	
		SHEET 3 OF 4	
DRG. No:		K10-126-103	
DRN:	TECH	SCALE:	NTS
DATE:	2018	REV. No:	A



1. DOOR JAMB 0-60kgs

PLEASE NOTE

- TIMBER GROUND NOT REQUIRED FOR STRUCTURAL PERFORMANCE, HOWEVER MAY BE REQUIRED BY DOOR MANUFACTURER.
- DOOR JAMB ARRANGEMENT REPEATED BOTH SIDES OF DOOR OPENING
- POSITION OF FLAT PLATE TO SUIT DEFLECTION ALLOWANCE (IF REQUIRED)



2. DOOR JAMB 60-100kgs

PLEASE NOTE

- TIMBER GROUND NOT REQUIRED FOR STRUCTURAL PERFORMANCE, HOWEVER MAY BE REQUIRED BY DOOR MANUFACTURER.
- DOOR JAMB ARRANGEMENT REPEATED BOTH SIDES OF DOOR OPENING
- POSITION OF FLAT PLATE TO SUIT DEFLECTION ALLOWANCE (IF REQUIRED)

A	1 x12.5mm KNAUF AQUAPANEL INTERIOR
B	50mm KNAUF ACOUSTIC 'C' STUDS AT MAX 600mm CENTRES
C	KNAUF FIXINGS
D	52mm KNAUF 'U' CHANNEL
E	50mm KNAUF EARTHWOOL ACOUSTIC ROLL
F	KNAUF INTUMESCENT & ACOUSTIC MASTIC
G	KNAUF AQUAPANEL JOINTING RANGE
H	KNAUF FLAT PLATE
I	SHAPED TIMBER GROUND (BY OTHERS)
J	ACOUSTIC 'C' STUDS
K	52mm KNAUF DEEP FLANGE 'U' CHANNEL
L	KNAUF FIRE PANEL FILLETS TO SUIT DEFLECTION WITH 10mm OVERLAP
M	KNAUF PUTTY PAD
N	KNAUF AQUAPANEL INTERIOR SKIM

SYSTEM PERFORMANCE:	
FIRE :	NONE
SOUND:	44dB Rw
MAX HEIGHT*:	2700mm
IMPACT DUTY**:	SEVERE
MIN. WIDTH:	77mm
*MAXIMUM HEIGHT CALCULATED BASED ON A LIMITING DEFLECTION OF L/240 AT 200Pa	
**IMPACT DUTY IN ACCORDANCE WITH BS5234-2:1992 ANNEXES B, C, D, E.	

NOTES



PROJECT:	A11-11
TITLE:	STANDARD DETAILS
SHEET 4 OF 4	
DRG. No:	K10-126-104
DRN:	TECH
SCALE:	NTS
DATE:	2018
REV. No:	A