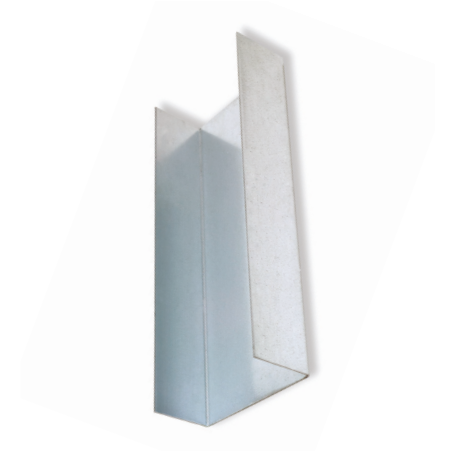


## Product Data Sheet

# Knauf Steel Framing System (SFS) C Stud



**Knauf SFS C Studs are galvanised solid metal studs available in a range of different sizes and gauges, in custom cut lengths from 900mm upwards.**

### Areas of Application

Light gauge steel sections to provide structural support for various cladding systems and accommodate various loading types.

Suitable for internal walls and external wall build-ups

### Key Benefits

- Full design service available including BIM modelling
- Cut to length components reducing on site wastage
- Part of a full BBA certified Throughwall system

### Compliance Standards

BS EN 1090-1:2009 + A1:2011

### Performance Data

Reaction to Fire (R2F)	Flexural Strength	Load Bearing Capacity	Durability	Yield Strength
Class A1 Steel only	BS EN 10162:2003 - cross sectional tolerances & BS EN 1090-2:2018	Design calculation and section properties according to BS EN 1993	S450GD+Z275	S450GD

## Technical information

Dimensions and Weights						
Length (mm)	Lip (mm)	Web (mm)	Flange (mm)	Gauge (mm)	Weight (kg/lm)	Material number
cut to order	10	70	50	1.2	1.69	675574
cut to order	14	70	70	1.2	2.15	675575
cut to order	14	70	70	2.0	3.49	675576
cut to order	10	90	50	1.2	1.88	675577
cut to order	12	90	60	1.2	2.12	675578
cut to order	14	90	70	1.2	2.35	675579
cut to order	14	90	70	1.5	2.90	675580
cut to order	14	90	70	1.8	3.45	675581
cut to order	14	90	70	2.0	3.80	675582
cut to order	10	100	50	1.2	1.97	675583
cut to order	12	100	60	1.2	2.15	675584
cut to order	14	100	70	1.2	2.45	675585
cut to order	14	100	70	1.5	3.01	675586
cut to order	14	100	70	1.8	3.59	675587
cut to order	14	100	70	2.0	3.96	675588
cut to order	10	120	50	1.2	2.26	675589
cut to order	12	120	60	1.2	2.36	675590
cut to order	14	120	70	1.2	2.63	675591
cut to order	14	120	70	1.5	3.25	675592
cut to order	14	120	70	1.8	3.87	675593
cut to order	14	120	70	2.0	4.27	675594
cut to order	10	150	50	1.2	2.45	675595
cut to order	12	150	60	1.2	2.68	675596
cut to order	14	150	70	1.2	2.90	675597
cut to order	14	150	70	1.5	3.60	675598
cut to order	14	150	70	1.8	4.30	675599
cut to order	14	150	70	2.0	4.74	675600
cut to order	10	200	50	1.2	2.92	675601
cut to order	12	200	60	1.2	3.16	675602
cut to order	14	200	70	1.2	3.37	675603
cut to order	14	200	70	1.5	4.19	675604
cut to order	14	200	70	1.8	5.00	675605
cut to order	14	200	70	2.0	5.53	675606
cut to order	10	250	50	1.2	3.37	675607
cut to order	12	250	60	1.2	3.63	675608
cut to order	14	250	70	1.2	3.84	675609

## Technical information

Dimensions and Weights						
Length (mm)	Lip (mm)	Web (mm)	Flange (mm)	Gauge (mm)	Weight (kg/lm)	Material number
cut to order	14	250	70	1.5	4.78	675610
cut to order	14	250	70	1.8	5.68	675611
cut to order	14	250	70	2.0	6.31	675612
cut to order	10	300	50	1.2	3.87	675613
cut to order	12	300	60	1.2	4.10	675614
cut to order	14	300	70	1.2	4.32	675615
cut to order	14	300	70	1.5	5.37	675616
cut to order	14	300	70	1.8	6.42	675617
cut to order	14	300	70	2.0	7.10	675618

## Sustainability

### Total Recycled Content

18.41%

### Recyclability

Full recyclable

## Storage and Handling

When using hand tools eye protection should be worn.

Formed edges and cut ends may be sharp. Gloves should be worn when handling the material to avoid risk of lacerations.

Head protection should be worn when overhead hazards exist.

Avoid prolonged contact with skin and wear protective clothing when handling metal sections.

## Packaging

Supplied bundled in small packs and strapped together in large packs for fork-lift truck off-loading, which should be stacked in a safe and stable manner. The bands or straps should not be used for lifting. Metal sections may spring apart when banding is released.

## Disposal/Repair

Recycle or can be disposed of at an authorised landfill site in accordance with local or national controls.

## Health & Safety

Please refer to our Safety Data Sheet for guidance on Personal Protection Equipment required for the handling and installation of this product.

## Application / Installation

Knauf SFS C Studs come in custom lengths to remove the need to cut on site. This therefore allows for easy installation between a head and base track (either Knauf U Track or Knauf Slotted U Track).

## Additional Documentation

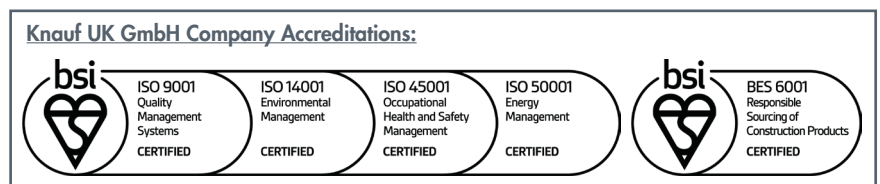
[Declaration of Performance UKCA](#)

[Declaration of Performance CE](#)

[Safety Data Sheet](#)

## Certification

[Environmental Product Declaration](#)



### Customer Service

UK Tel: 0800 521 050  
Eire Tel: 01 4620739  
Email: [cservice@knauf.com](mailto:cservice@knauf.com)

### Technical Service

0800 521050 (option 2)  
Live Webchat 09:00 -17:00  
[technical-uk@knauf.com](mailto:technical-uk@knauf.com)

### Website

[www.knauf.co.uk](http://www.knauf.co.uk)  
[www.knauf.ie](http://www.knauf.ie)

### Address

Knauf  
Kemsley Fields Business Park  
Sittingbourne  
Kent ME9 8SR

KML100477

The information given in this publication is believed to be current and accurate as at the date of publication, but no warranty, express or implied is given. Updates will not be automatically issued.

© Copyright Knauf 2023

Creation Date: 08/06/2023  
Revision Reference: 001  
Revision Date: 08/06/2023