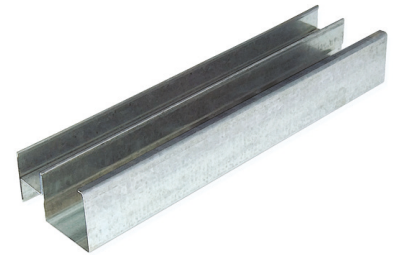


## Product Data Sheet

# Knauf CT Stud



**Knauf CT Stud is a galvanized steel section used in the Knauf Shaftwall system to allow quick and safe construction from one side with the minimum number of components.**

### Areas of Application

To be used as part of a Knauf shaftwall system.

### Key Benefits

- Quick and easy to install
- Fully recyclable
- EPD certification available

### Compliance Standards

BS EN 14195:2014

### Performance Data

Reaction to Fire (R2F)	Yield Strength ( $\sigma$ )
A1	NPD

## Technical information

Dimensions and Weights							
Length (mm)	Size/Webb (mm)	Flange (mm)	Gauge (mm)	Weight (kg/piece)	Coating Type/Weight (gsm)	Coating thickness (microns nominal in accordance with BS EN 10346:2015)	Material Number
3000	60	38.5	0.92	4.2	Zinc - 140	10	243804
3000	60	38.5	0.92	6.3	Zinc - 140	10	243811
3000	92	38.5	0.92	7.3	Zinc - 140	10	243818
3000	92	38.5	0.92	8.9	Zinc - 140	10	243819
3000	146	38.5	0.92	11.0	Zinc - 140	10	243801
3000	146	38.5	0.92	13.0	Zinc - 140	10	243802

## Sustainability

### Total Recycled Content

15-20%

### Recyclability

Fully recyclable

## Storage and Handling

No temperature constraints, but salt spray and corrosive atmospheric conditions must be avoided. Must be kept in dry conditions.

## Packaging

Components are tied with filament tape and on wooden bearers.

## Disposal/Repair

Separate metal from any non-metal components and recycle in accordance with local authority requirements.

European Waste Catalogue code: 17 08 02

## Health & Safety

Please refer to our Safety Data Sheet for guidance on Personal Protection Equipment required for the handling and installation of this product.

## Application / Installation

Please refer to our system installation instructions for details on how to install CT Stud as part of a Knauf Shaftwall system.

## Additional Documentation

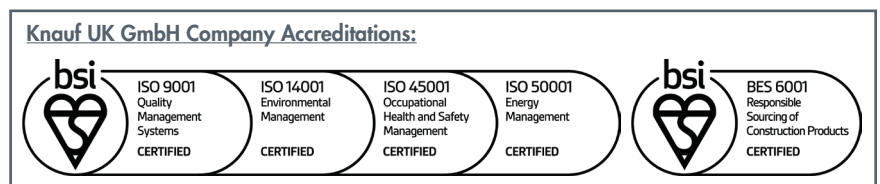
[Declaration of Performance UKCA](#)

[Declaration of Performance CE](#)

[Safety Data Sheet](#)

## Certification

[Environmental Product Declaration](#)



### Customer Service

UK Tel: 0800 521 050  
Eire Tel: 01 4620739  
Email: [cservice@knauf.com](mailto:cservice@knauf.com)

### Technical Service

0800 521050 (option 2)  
Live Webchat 09:00 -17:00  
[technical-uk@knauf.com](mailto:technical-uk@knauf.com)

### Website

[www.knauf.co.uk](http://www.knauf.co.uk)  
[www.knauf.ie](http://www.knauf.ie)

### Address

Knauf  
Kemsley Fields Business Park  
Sittingbourne  
Kent ME9 8SR

KML100464

The information given in this publication is believed to be current and accurate as at the date of publication, but no warranty, express or implied is given. Updates will not be automatically issued.

© Copyright Knauf 2023

Creation Date: 31/08/2023  
Revision Reference: 001  
Revision Date: 31/08/2023