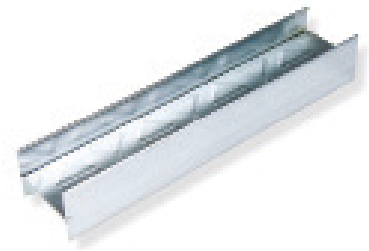


## Product Data Sheet

# Knauf I Stud



Knauf I Stud is a galvanized lightweight steel sections for use in non-load-bearing Knauf partition and wall lining systems allowing increased partition heights to be designed.

### Areas of Application

To be used as part of a Knauf partition system.

### Compliance Standards

BS EN 14195:2014

### Key Benefits

- Galvanized to protect against corrosive elements
- Easy to cut
- Fully recyclable
- EPD certification available

### Performance Data

Reaction to Fire (R2F)	Yield Strength ( $\sigma$ )
A1	NPD

## Technical information

Dimensions and Weights						
Length (mm)	Size/Webb (mm)	Gauge (mm)	Weight (kg/piece)	Coating Type/Weight (gsm)	Coating thickness (microns nominal in accordance with BS EN 10346:2015)	Material Number
2700	50	0.55	2.1	Zinc - 140	10	243944
3000	50	0.55	2.3	Zinc - 140	10	243947
3600	60	0.55	3.4	Zinc - 140	10	243952
4200	60	0.55	4.0	Zinc - 140	10	243954
3600	60	0.70	4.3	Zinc - 140	10	449759
4200	60	0.70	5.1	Zinc - 140	10	449712
3600	70	0.70	3.7	Zinc - 140	10	243958
4200	70	0.70	4.6	Zinc - 140	10	243963
5000	92	0.90	7.7	Zinc - 140	10	243973
6000	92	0.90	9.3	Zinc - 140	10	243974
6000	146	0.90	11.6	Zinc - 140	10	243941

## Sustainability

### Total Recycled Content

15-20%

### Recyclability

Fully recyclable

## Storage and Handling

No temperature constraints, but salt spray and corrosive atmospheric conditions must be avoided. Must be kept in dry conditions.

## Packaging

Components are tied with filament tape and on wooden bearers.

## Disposal/Repair

Separate metal from any non-metal components and recycle in accordance with local authority requirements.

European Waste Catalogue code: 17 04 05

## Health & Safety

Please refer to our Safety Data Sheet for guidance on Personal Protection Equipment required for the handling and installation of this product.

## Application / Installation

Please refer to our system installation instructions for details on how to install I Stud as part of a Knauf system.

## Additional Documentation

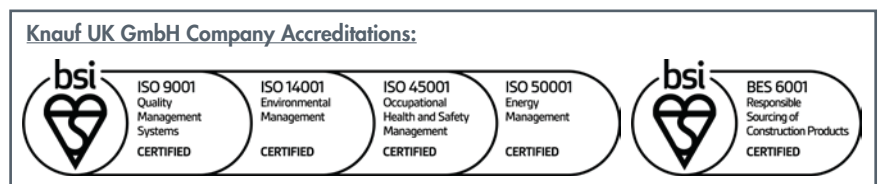
[Declaration of Performance UKCA](#)

[Declaration of Performance CE](#)

[Safety Data Sheet](#)

## Certification

[Environmental Product Declaration](#)



### Customer Service

UK Tel: 0800 521 050  
Eire Tel: 01 4620739  
Email: [cservice@knauf.com](mailto:cservice@knauf.com)

### Technical Service

0800 521050 (option 2)  
Live Webchat 09:00 -17:00  
[technical-uk@knauf.com](mailto:technical-uk@knauf.com)

### Website

[www.knauf.co.uk](http://www.knauf.co.uk)  
[www.knauf.ie](http://www.knauf.ie)

### Address

Knauf  
Kemsley Fields Business Park  
Sittingbourne  
Kent ME9 8SR

KML100465

The information given in this publication is believed to be current and accurate as at the date of publication, but no warranty, express or implied is given. Updates will not be automatically issued.

© Copyright Knauf 2023

Creation Date: 31/08/2023

Revision Reference: 002

Revision Date: 10/04/2024

**Build for the world we live in**